

Model	LN32A550P3F	
Feature		
<ul style="list-style-type: none">▶ HD_READY (FHD), RF, 3-HDMI, 2-Component, 2-A/V(REAR/ SIDE), 1-S-Video, USB2.0(WISELINK -JPEG/ MP3), D-SUB▶ Brightness : 500cd/m²▶ Contrast Ratio : 8000:1▶ Response time : 6ms▶ Dynamic contrast, Super-PVA▶ PIP(in HDMI 1, 2, 3, Component 1, 2, PC Mode and Sub picture is available only in TV/ AV mode)		
Specifications		
Item	Description	
LCD Panel	TFT-LCD panel, RGB vertical stripe, SPVA mode, normaly black, 32-Inch viewable, 0.3635 (H) x 0.36375 (W) mm pixel pitch	
Scanning Frequency	Horizontal : 67.5 kHz (Automatic) Vertical : 48 Hz ~ 63 Hz (Automatic)	
Display Colors	16.7 million colors	
Maximum resolution	Horizontal : 1920 Pixels Vertical : 1080 Pixels	
Input Signal	Analog 0.7 Vp-p ± 5% positive at 75Ω , internally terminated	
Input Sync Signal	H/V Separate, TTL, P. or N.	
Maximum Pixel Clock rate	310MHz	
Active Display Horizontal/Vertical	698.4(H) x 392.85(V) mm	
AC power voltage & Frequency	AC100 ~ 240V, 50 / 60Hz	
Power Consumption	<245 W (< 1W, stand by)	
Dimensions Set (W x D x H)	865.0 x 220.0 x 561.0 mm_with stand 865.0 x 79.0 x 449.8 mm_without stand	
Weight (Set)	13.7 Kg	
TV System	Tuning	Voltage / Frequency Synthesize (Refer to detailed Frequency Table)
	System	PAL - B/G, D/K, I / NTSC 3.58 / SECAM - D/K
	Sound	STEREO
Audio System	<ul style="list-style-type: none">- MAX Internal speaker Out : Right => 10W, Left => 10W- BASS Control Range : -8 dB ~ + 8dB- TREBLE Control Range : -8 dB ~ +8 dB- Headphone Out : 10 mW MAX- Output Frequency : RF : 80 Hz ~ 15 kHzA/V : 80 Hz ~ 15 kHz	
Environmental Considerations	Operating Temperature : 50°F ~ 104°F (10°C ~ 40°C) Operating Humidity : 10% ~ 80%, non-condensing Storage temperature : -13°F ~ 113°F (-25°C ~ 45°C) Storage Humidity : 5% ~ 95%, non-condensing	
Note: Anynet+, WISELINK		

2. Product specifications

Model	LN40A550P3F	
Feature		
<ul style="list-style-type: none"> ▶ HD_READY (FHD), RF, 3-HDMI, 2-Component, 2-A/V(REAR/ SIDE), 1-S-Video, USB2.0(WISELINK -JPEG/ MP3), D-SUB ▶ Brightness : 500cd/m² ▶ Contrast Ratio : 8000:1 ▶ Response time : 6ms ▶ Dynamic contrast, Super-PVA ▶ PIP(in HDMI 1, 2, 3, Component 1, 2, PC Mode and Sub picture is available only in TV/ AV mode) 		
Specifications		
Item	Description	
LCD Panel	TFT-LCD panel, RGB vertical stripe, SPVA mode, normally black, 40-Inch viewable, 0.461(H) x 0.461(W) mm pixel pitch	
Scanning Frequency	Horizontal : 65 kHz ~ 72 kHz (Automatic) Vertical : 57 Hz ~ 63 Hz (Automatic)	
Display Colors	16.7 million colors	
Maximum resolution	Horizontal : 1920 Pixels Vertical : 1080 Pixels	
Input Signal	Analog 0.7 Vp-p ± 5% positive at 75Ω , internally terminated	
Input Sync Signal	H/V Separate, TTL, P. or N.	
Maximum Pixel Clock rate	310MHz	
Active Display Horizontal/Vertical	885.6(H) x 498.15(V) mm	
AC power voltage & Frequency	AC100 ~ 240V, 50 / 60Hz	
Power Consumption	<245 W (< 1W, stand by)	
Dimensions Set (W x D x H)	1,058.0 x 240.0 x 671.9 mm _with stand 1,058.0 x 90.8 x 607.5mm _without stand	
Weight (Set)	Set : 19.3 kg(After installation of Stand) Package : 25.0 kg (Stand : 2.9 kg)	
TV System	Tuning	Voltage / Frequency Synthesize (Refer to detailed Frequency Table)
	System	PAL - B/G, D/K, I / NTSC 3.58 / SECAM - D/K
	Sound	STEREO
Audio System	- MAX Internal speaker Out : Right => 10W, Left => 10W - BASS Control Range : -8 dB ~ + 8dB - TREBLE Control Range : -8 dB ~ +8 dB - Headphone Out : 10 mW MAX - Output Frequency : RF : 80 Hz ~ 15 kHz A/V : 80 Hz ~ 15 kHz	
Environmental Considerations	Operating Temperature : 50°F ~ 104°F (10°C ~ 40°C) Operating Humidity : 10% ~ 80%, non-condensing Storage temperature : -13°F ~ 113°F (-25°C ~ 45°C) Storage Humidity : 5% ~ 95%, non-condensing	
Note: Anynet+, WISELINK		

2-3

2. Product specifications

CHANNEL FREQUENCY TABLE

1. OUTPUT FREQUENCY : ANALOG fv : 45.75MHz fs : 41.25MHz
2. TUNING STEP SIZE : FIRST PLL 250KHz SECOND PLL 62.5KHz

(Unit : MHz)

CH Number	AREA									
	ASIA W/EUROPE	BAND	CIS E/EUROPE	BAND	HONG KONG U/K	BAND	NZ/INDO NE-SIA	BAND	SOUTH AFRICA	BAND
C00	-	-	-	-	-	-	-	-	-	-
C01	46.25	VHF	49.75	VHF	49.75	VHF	44.25	VHF	-	-
C02	48.25	VHF	59.25	V-L	59.25	V-L	55.25	V-L	-	-
C03	55.25	V-L	77.25	V-L	77.25	V-L	62.25	V-L	-	-
C04	62.25	V-L	85.25	V-L	85.25	V-L	175.25	V-H	175.25	V-H
C05	175.25	V-H	93.25	VHF	93.25	VHF	182.25	V-H	183.25	V-H
C06	182.25	V-H	175.25	V-H	175.25	V-H	189.25	V-H	191.25	V-H
C07	189.25	V-H	183.25	V-H	183.25	V-H	196.25	V-H	199.25	V-H
C08	196.25	V-H	191.25	V-H	191.25	V-H	203.25	V-H	207.25	V-H
C09	203.25	V-H	199.25	V-H	199.25	V-H	210.25	V-H	215.25	V-H
C10	210.25	V-H	207.25	V-H	207.25	V-H	217.25	VHF	223.25	VHF
C11	217.25	VHF	215.25	V-H	215.25	V-H	224.25	VHF	231.25	VHF
C12	224.25	VHF	223.25	VHF	223.25	VHF	45.25	VHF	239.25	VHF
C13	53.75	VHF	53.75	VHF	45.75	VHF	-	-	247.25	VHF
C14	-	-	62.25	V-L	53.75	VHF	-	-	-	-
C15	82.25	V-L	82.25	V-L	61.75	V-L	-	-	-	-
C16	-	-	-	-	-	-	69.75	V-L	-	-
C17	183.75	V-H	183.75	V-H	95.75	VHF	-	-	-	-
C18	192.25	V-H	192.25	V-H	-	-	-	-	-	-
C19	201.25	V-H	-	-	201.25	V-H	-	-	-	-
C20	-	-	210.25	V-H	-	-	-	-	-	-
C21	471.25	UHF	471.25	UHF	471.25	UHF	471.25	UHF	471.25	UHF
C22	479.25	UHF	479.25	UHF	479.25	UHF	479.25	UHF	479.25	UHF
C23	487.25	UHF	487.25	UHF	487.25	UHF	487.25	UHF	487.25	UHF
C24	495.25	UHF	495.25	UHF	495.25	UHF	495.25	UHF	495.25	UHF
C25	503.25	UHF	503.25	UHF	503.25	UHF	503.25	UHF	503.25	UHF
C26	511.25	UHF	511.25	UHF	511.25	UHF	511.25	UHF	511.25	UHF
C27	519.25	UHF	519.25	UHF	519.25	UHF	519.25	UHF	519.25	UHF
C28	527.25	UHF	527.25	UHF	527.25	UHF	527.25	UHF	527.25	UHF
C29	535.25	UHF	535.25	UHF	535.25	UHF	535.25	UHF	535.25	UHF
C30	543.25	UHF	543.25	UHF	543.25	UHF	543.25	UHF	543.25	UHF
C31	551.25	UHF	551.25	UHF	551.25	UHF	551.25	UHF	551.25	UHF
C32	559.25	UHF	559.25	UHF	559.25	UHF	559.25	UHF	559.25	UHF
C33	567.25	UHF	567.25	UHF	567.25	UHF	567.25	UHF	567.25	UHF
C34	575.25	UHF	575.25	UHF	575.25	UHF	575.25	UHF	575.25	UHF
C35	583.25	UHF	583.25	UHF	583.25	UHF	583.25	UHF	583.25	UHF
C36	591.25	UHF	591.25	UHF	591.25	UHF	591.25	UHF	591.25	UHF
C37	599.25	UHF	599.25	UHF	599.25	UHF	599.25	UHF	599.25	UHF
C38	607.25	UHF	607.25	UHF	607.25	UHF	607.25	UHF	607.25	UHF
C39	615.25	UHF	615.25	UHF	615.25	UHF	615.25	UHF	615.25	UHF
C40	623.25	UHF	623.25	UHF	623.25	UHF	623.25	UHF	623.25	UHF
C41	631.25	UHF	631.25	UHF	631.25	UHF	631.25	UHF	631.25	UHF
C42	639.25	UHF	639.25	UHF	639.25	UHF	639.25	UHF	639.25	UHF
C43	647.25	UHF	647.25	UHF	647.25	UHF	647.25	UHF	647.25	UHF
C44	655.25	UHF	655.25	UHF	655.25	UHF	655.25	UHF	655.25	UHF
C45	663.25	UHF	663.25	UHF	663.25	UHF	663.25	UHF	663.25	UHF
C46	671.25	UHF	671.25	UHF	671.25	UHF	671.25	UHF	671.25	UHF
C47	679.25	UHF	679.25	UHF	679.25	UHF	679.25	UHF	679.25	UHF
C48	687.25	UHF	687.25	UHF	687.25	UHF	687.25	UHF	687.25	UHF
C49	695.25	UHF	695.25	UHF	695.25	UHF	695.25	UHF	695.25	UHF
C50	703.25	UHF	703.25	UHF	703.25	UHF	703.25	UHF	703.25	UHF
C51	711.25	UHF	711.25	UHF	711.25	UHF	711.25	UHF	711.25	UHF

CH Number	AREA									
	ASIA W/EUROPE	BAND	CIS E/EUROPE	BAND	HONG KONG U/K	BAND	NZ/INDO NE-SIA	BAND	SOUTH AFRICA	BAND
C52	719.25	UHF	719.25	UHF	719.25	UHF	719.25	UHF	719.25	UHF
C53	727.25	UHF	727.25	UHF	727.25	UHF	727.25	UHF	727.25	UHF
C54	735.25	UHF	735.25	UHF	735.25	UHF	735.25	UHF	735.25	UHF
C55	743.25	UHF	743.25	UHF	743.25	UHF	743.25	UHF	743.25	UHF
C56	751.25	UHF	751.25	UHF	751.25	UHF	751.25	UHF	751.25	UHF
C57	759.25	UHF	759.25	UHF	759.25	UHF	759.25	UHF	759.25	UHF
C58	767.25	UHF	767.25	UHF	767.25	UHF	767.25	UHF	767.25	UHF
C59	775.25	UHF	775.25	UHF	775.25	UHF	775.25	UHF	775.25	UHF
C60	783.25	UHF	783.25	UHF	783.25	UHF	783.25	UHF	783.25	UHF
C61	791.25	UHF	791.25	UHF	791.25	UHF	791.25	UHF	791.25	UHF
C62	799.25	UHF	799.25	UHF	799.25	UHF	799.25	UHF	799.25	UHF
C63	807.25	UHF	807.25	UHF	807.25	UHF	807.25	UHF	807.25	UHF
C64	815.25	UHF	815.25	UHF	815.25	UHF	815.25	UHF	815.25	UHF
C65	823.25	UHF	823.25	UHF	823.25	UHF	823.25	UHF	823.25	UHF
C66	831.25	UHF	831.25	UHF	831.25	UHF	831.25	UHF	831.25	UHF
C67	839.25	UHF	839.25	UHF	839.25	UHF	839.25	UHF	839.25	UHF
C68	847.25	UHF	847.25	UHF	847.25	UHF	847.25	UHF	847.25	UHF
C69	855.25	UHF	855.25	UHF	855.25	UHF	855.25	UHF	855.25	UHF
C70	-	-	-	-	-	-	53.75	-	53.75	-
C71	-	-	-	-	62.25	VHF	-	-	62.25	VHF
C72	-	-	-	-	82.25	V-L	82.25	V-L	82.25	V-L
C73	-	-	-	-	-	-	-	-	-	-
C74	69.75	V-L	-	-	-	-	183.25	V-H	-	-
C75	76.25	V-L	-	-	192.25	V-H	192.25	V-H	192.25	V-H
C76	83.25	V-L	-	-	201.25	V-H	201.25	V-H	201.25	V-H
C77	90.25	VHF	-	-	210.25	V-H	-	-	210.25	V-H
C78	97.25	VHF	217.25	VHF	217.25	VHF	-	-	217.25	VHF
C79	59.25	V-L	224.25	VHF	224.25	VHF	-	-	224.25	VHF
C80	-	-	93.25	VHF	-	-	-	-	-	-
C81	49.75	VHF	-	-	-	-	49.75	VHF	49.75	VHF
C82	-	-	-	-	-	-	59.25	V-L	59.25	V-L
C83	77.25	V-L	-	-	77.25	V-L	77.25	V-L	77.25	V-L
C84	85.25	V-L	-	-	85.25	V-L	85.25	V-L	85.25	V-L
C85	-	-	-	-	93.25	VHF	93.25	VHF	93.25	VHF
C86	-	-	-	-	-	-	-	-	-	-
C86	183.25	V-H	-	-	-	-	-	-	-	-
C86	191.25	V-H	-	-	-	-	191.25	V-H	-	-
C86	199.25	V-H	-	-	199.25	V-H	199.25	V-H	-	-
C86	207.25	V-H	-	-	207.25	V-H	207.25	V-H	-	-
C86	215.25	VHF	-	-	-	-	215.25	VHF	215.25	VHF
C86	223.25	VHF	-	-	-	-	223.25	VHF	223.25	VHF

2. Product specifications

CH Number	AREA					
	AUSTRALIA	BAND	CHINA	BAND	AMERICA	BAND
C00	46.25	VHF	-	-	-	-
C01	57.25	V-L	49.75	VHF	-	-
C02	64.25	V-L	57.75	V-L	55.25	V-L
C03	86.25	V-L	65.75	V-L	61.25	V-L
C04	95.25	VHF	77.25	V-L	67.25	V-L
C05	102.25	VHF	85.25	V-L	77.25	V-L
C06	175.25	V-H	168.25	VHF	83.25	V-L
C07	182.25	V-H	176.25	V-H	175.25	V-H
C08	189.25	V-H	184.25	V-H	181.25	V-H
C09	196.25	V-H	192.25	V-H	187.25	V-H
C10	209.25	V-H	200.25	V-H	193.25	V-H
C11	216.25	VHF	208.25	VHF	199.25	VHF
C12	224.25	VHF	216.25	VHF	205.25	VHF
C13	138.25	V-H	471.25	UHF	211.25	VHF
C14	203.25	V-H	479.25	UHF	471.25	UHF
C15	-	-	487.25	UHF	477.25	UHF
C16	-	-	495.25	UHF	483.25	UHF
C17	-	-	503.25	UHF	489.25	UHF
C18	-	-	511.25	UHF	495.25	UHF
C19	-	-	519.25	UHF	501.25	UHF
C20	-	-	527.25	UHF	507.25	UHF
C21	x	-	535.25	UHF	513.25	UHF
C22	x	-	543.25	UHF	519.25	UHF
C23	x	-	551.25	UHF	525.25	UHF
C24	x	-	559.25	UHF	531.25	UHF
C25	x	-	607.25	UHF	537.25	UHF
C26	x	-	615.25	UHF	543.25	UHF
C27	x	-	623.25	UHF	549.25	UHF
C28	527.25	UHF	631.25	UHF	555.25	UHF
C29	534.25	UHF	639.25	UHF	561.25	UHF
C30	541.25	UHF	647.25	UHF	567.25	UHF
C31	548.25	UHF	655.25	UHF	573.25	UHF
C32	555.25	UHF	663.25	UHF	579.25	UHF
C33	562.25	UHF	671.25	UHF	585.25	UHF
C34	569.25	UHF	679.25	UHF	591.25	UHF
C35	576.25	UHF	687.25	UHF	597.25	UHF
C36	583.25	UHF	695.25	UHF	603.25	UHF
C37	590.25	UHF	703.25	UHF	609.25	UHF
C38	597.25	UHF	711.25	UHF	615.25	UHF
C39	604.25	UHF	719.25	UHF	621.25	UHF
C40	611.25	UHF	727.25	UHF	627.25	UHF
C41	618.25	UHF	735.25	UHF	633.25	UHF
C42	625.25	UHF	743.25	UHF	639.25	UHF
C43	632.25	UHF	751.25	UHF	645.25	UHF
C44	639.25	UHF	759.25	UHF	651.25	UHF
C45	646.25	UHF	767.25	UHF	657.25	UHF
C46	653.25	UHF	775.25	UHF	663.25	UHF
C47	660.25	UHF	783.25	UHF	669.25	UHF
C48	667.25	UHF	791.25	UHF	675.25	UHF
C49	674.25	UHF	799.25	UHF	681.25	UHF
C50	681.25	UHF	807.25	UHF	687.25	UHF
C51	688.25	UHF	815.25	UHF	693.25	UHF

CH Number	AREA					
	AUSTRALIA	BAND	CHINA	BAND	AMERICA	BAND
C52	695.25	UHF	823.25	UHF	699.25	UHF
C53	702.25	UHF	831.25	UHF	705.25	UHF
C54	709.25	UHF	839.25	UHF	711.25	UHF
C55	716.25	UHF	847.25	UHF	717.25	UHF
C56	723.25	UHF	855.25	UHF	723.25	UHF
C57	730.25	UHF	863.25	UHF	729.25	UHF
C58	737.25	UHF	-	-	735.25	UHF
C59	744.25	UHF	-	-	741.25	UHF
C60	751.25	UHF	-	-	747.25	UHF
C61	758.25	UHF	-	-	753.25	UHF
C62	765.25	UHF	-	-	759.25	UHF
C63	772.25	UHF	-	-	765.25	UHF
C64	779.25	UHF	-	-	771.25	UHF
C65	786.25	UHF	567.25	UHF	777.25	UHF
C66	793.25	UHF	575.25	UHF	783.25	UHF
C67	800.25	UHF	583.25	UHF	789.25	UHF
C68	807.25	UHF	591.25	UHF	795.25	UHF
C69	814.25	UHF	599.25	UHF	801.25	UHF
C70	53.75	-	-	-	807.25	UHF
C71	62.25	VHF	-	-	813.25	UHF
C72	82.25	V-L	-	-	819.25	UHF
C73	-	-	-	-	825.25	UHF
C74	183.25	-	-	-	831.25	UHF
C75	192.25	V-H	-	-	837.25	UHF
C76	201.25	V-H	-	-	843.25	UHF
C77	-	V-H	-	-	849.25	UHF
C78	-	VHF	-	-	855.25	UHF
C79	-	VHF	-	-	861.25	UHF
C80	-	-	-	-	867.25	UHF
C81	49.75	VHF	-	-	873.25	UHF
C82	59.25	V-L	-	-	879.25	UHF
C83	77.25	V-L	-	-	885.25	UHF
C84	85.25	V-L	-	-	-	-
C85	93.25	VHF	-	-	-	-
C86	-	-	-	-	-	-
C86	-	-	-	-	-	-
C86	191.25	-	-	-	-	-
C86	199.25	-	-	-	-	-
C86	207.25	-	-	-	-	-
C86	215.25	VHF	-	-	-	-
C86	223.25	VHF	-	-	-	-

2. Product specifications

CH Number	Cable CHANNEL									
	ASIA W/EUROPE	BAND	CIS E/EUROPE	BAND	HONG KONG U/K	BAND	NZ/INDO NE-SIA	BAND	SOUTH AFRICA	BAND
S01	105.25	VHF	103.25	VHF	103.25	VHF	105.25	VHF	105.25	VHF
S02	112.25	VHF	111.25	VHF	111.25	VHF	112.25	VHF	112.25	VHF
S03	119.25	VHF	119.25	VHF	119.25	VHF	119.25	VHF	119.25	VHF
S04	126.25	VHF	127.25	VHF	127.25	VHF	126.25	VHF	126.25	VHF
S05	133.25	VHF	135.25	VHF	135.25	VHF	133.25	VHF	133.25	VHF
S06	140.25	VHF	143.25	VHF	143.25	VHF	140.25	VHF	140.25	VHF
S07	147.25	VHF	151.25	VHF	151.25	VHF	147.25	VHF	147.25	VHF
S08	154.25	VHF	159.25	VHF	159.25	VHF	154.25	VHF	154.25	VHF
S09	161.25	VHF	167.25	VHF	167.25	VHF	161.25	VHF	161.25	VHF
S10	168.25	VHF	231.25	VHF	231.25	VHF	168.25	VHF	168.25	VHF
S11	231.25	VHF	239.25	VHF	239.25	VHF	231.25	VHF	231.25	VHF
S12	238.25	VHF	247.25	VHF	247.25	VHF	238.25	VHF	238.25	VHF
S13	245.25	VHF	253.25	VHF	253.25	VHF	245.25	VHF	245.25	VHF
S14	252.25	VHF	263.25	VHF	263.25	VHF	252.25	VHF	252.25	VHF
S15	259.25	VHF	271.25	VHF	271.25	VHF	259.25	VHF	259.25	VHF
S16	266.25	VHF	279.25	VHF	279.25	VHF	266.25	VHF	266.25	VHF
S17	273.25	VHF	287.25	VHF	287.25	VHF	273.25	VHF	273.25	VHF
S18	280.25	VHF	295.25	VHF	295.25	VHF	280.25	VHF	280.25	VHF
S19	287.25	VHF	303.25	UHF	303.25	UHF	287.25	VHF	287.25	VHF
S20	294.25	VHF	-	-	-	-	294.25	VHF	294.25	VHF
S21	303.25	UHF	-	-	-	-	303.25	UHF	303.25	UHF
S22	311.25	UHF	311.25	UHF	311.25	UHF	311.25	UHF	311.25	UHF
S23	319.25	UHF	319.25	UHF	319.25	UHF	319.25	UHF	319.25	UHF
S24	327.25	UHF	327.25	UHF	327.25	UHF	327.25	UHF	327.25	UHF
S25	335.25	UHF	335.25	UHF	335.25	UHF	335.25	UHF	335.25	UHF
S26	343.25	UHF	343.25	UHF	343.25	UHF	343.25	UHF	343.25	UHF
S27	351.25	UHF	351.25	UHF	351.25	UHF	351.25	UHF	351.25	UHF
S28	359.25	UHF	359.25	UHF	359.25	UHF	359.25	UHF	359.25	UHF
S29	367.25	UHF	367.25	UHF	367.25	UHF	367.25	UHF	367.25	UHF
S30	375.25	UHF	375.25	UHF	375.25	UHF	375.25	UHF	375.25	UHF
S31	383.25	UHF	383.25	UHF	383.25	UHF	383.25	UHF	383.25	UHF
S32	391.25	UHF	391.25	UHF	391.25	UHF	391.25	UHF	391.25	UHF
S33	399.25	UHF	399.25	UHF	399.25	UHF	399.25	UHF	399.25	UHF
S34	407.25	UHF	407.25	UHF	407.25	UHF	407.25	UHF	407.25	UHF
S35	415.25	UHF	415.25	UHF	415.25	UHF	415.25	UHF	415.25	UHF
S36	423.25	UHF	423.25	UHF	423.25	UHF	423.25	UHF	423.25	UHF
S37	431.25	UHF	431.25	UHF	431.25	UHF	431.25	UHF	431.25	UHF
S38	439.25	UHF	439.25	UHF	439.25	UHF	439.25	UHF	439.25	UHF
S39	447.25	UHF	447.25	UHF	447.25	UHF	447.25	UHF	447.25	UHF
S40	455.25	UHF	455.25	UHF	455.25	UHF	455.25	UHF	455.25	UHF
S41	463.25	UHF	463.25	UHF	463.25	UHF	463.25	UHF	463.25	UHF

CH Number	Cable CHANNEL					
	AUSTRALIA	BAND	CHINA	BAND	AMERICA	BAND
S01	105.25	VHF	112.25	VHF	73.25	VHF
S02	112.25	VHF	120.25	VHF	55.25	VHF
S03	119.25	VHF	128.25	VHF	61.25	VHF
S04	126.25	VHF	136.25	VHF	67.25	VHF
S05	133.25	VHF	144.25	VHF	77.25	VHF
S06	140.25	VHF	152.25	VHF	83.25	VHF
S07	147.25	VHF	160.25	VHF	175.25	VHF
S08	154.25	VHF	224.25	VHF	181.25	VHF
S09	161.25	VHF	232.25	VHF	187.25	VHF
S10	168.25	VHF	240.25	VHF	193.25	VHF
S11	231.25	VHF	248.25	VHF	199.25	VHF
S12	238.25	VHF	256.25	VHF	205.25	VHF
S13	245.25	VHF	264.25	VHF	211.25	VHF
S14	252.25	VHF	272.25	VHF	121.25	VHF
S15	259.25	VHF	280.25	VHF	127.25	VHF
S16	266.25	VHF	288.25	VHF	133.25	VHF
S17	273.25	VHF	296.25	VHF	139.25	VHF
S18	280.25	VHF	304.25	UHF	145.25	VHF
S19	287.25	VHF	312.25	UHF	151.25	VHF
S20	294.25	VHF	320.25	UHF	157.25	VHF
S21	303.25	UHF	328.25	UHF	163.25	VHF
S22	311.25	UHF	336.25	UHF	169.25	VHF
S23	319.25	UHF	344.25	UHF	217.25	VHF
S24	327.25	UHF	352.25	UHF	223.25	VHF
S25	335.25	UHF	360.25	UHF	229.25	VHF
S26	343.25	UHF	368.25	UHF	235.25	VHF
S27	351.25	UHF	376.25	UHF	241.25	VHF
S28	359.25	UHF	384.25	UHF	247.25	VHF
S29	367.25	UHF	392.25	UHF	253.25	VHF
S30	375.25	UHF	400.25	UHF	259.25	VHF
S31	383.25	UHF	408.25	UHF	265.25	VHF
S32	391.25	UHF	416.25	UHF	271.25	VHF
S33	399.25	UHF	424.25	UHF	277.25	VHF
S34	407.25	UHF	432.25	UHF	283.25	VHF
S35	415.25	UHF	440.25	UHF	289.25	VHF
S36	423.25	UHF	448.25	UHF	295.25	VHF
S37	431.25	UHF	456.25	UHF	301.25	UHF
S38	439.25	UHF	x	x	307.25	UHF
S39	447.25	UHF	x	x	313.25	UHF
S40	455.25	UHF	x	x	319.25	UHF
S41	463.25	UHF	x	x	325.25	UHF

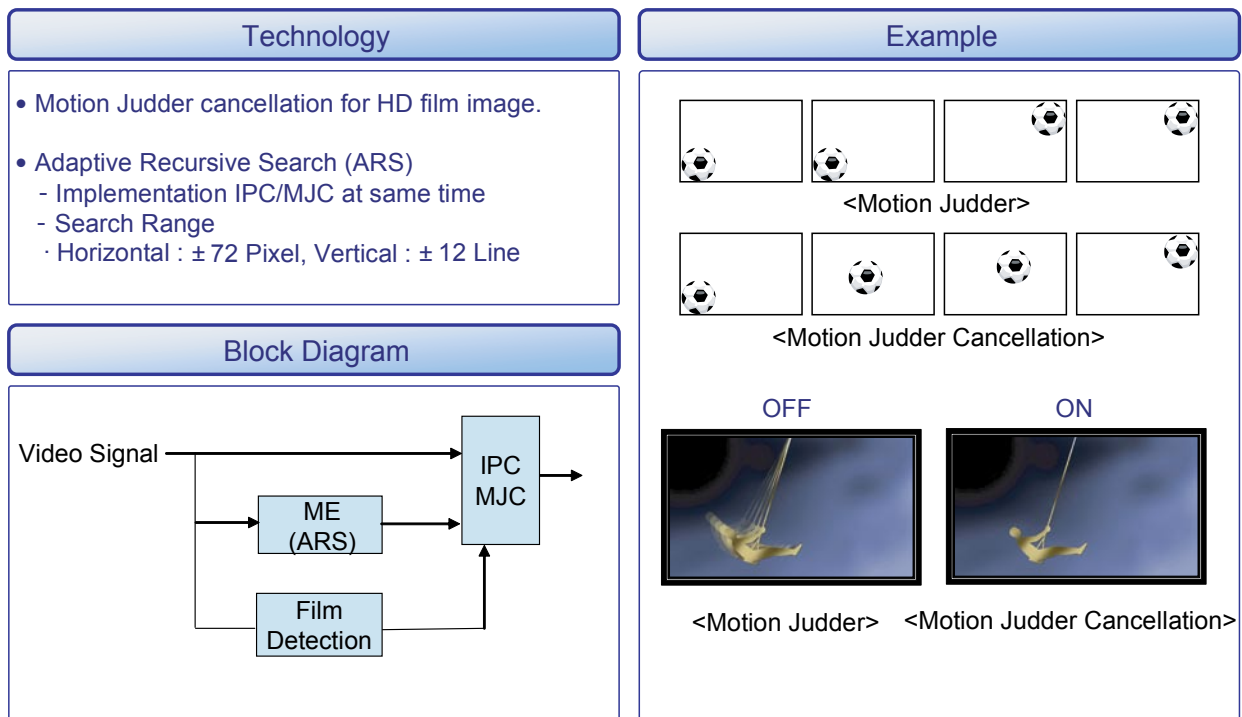
2. Product specifications

CH Number	Cable CHANNEL	
	AMERICA	BAND
S42	331.25	UHF
S43	337.25	UHF
S44	343.25	UHF
S45	349.25	UHF
S46	355.25	UHF
S47	361.25	UHF
S48	367.25	UHF
S49	373.25	UHF
S50	379.25	UHF
S51	385.25	UHF
S52	391.25	UHF
S53	397.25	UHF
S54	403.25	UHF
S55	409.25	UHF
S56	415.25	UHF
S57	421.25	UHF
S58	427.25	UHF
S59	433.25	UHF
S60	439.25	UHF
S61	445.25	UHF
S62	451.25	UHF
S63	457.25	UHF
S64	463.25	UHF
S65	469.25	UHF
S66	475.25	UHF
S67	481.25	UHF
S68	487.25	UHF
S69	493.25	UHF
S70	499.25	UHF
S71	505.25	UHF
S72	511.25	UHF
S73	517.25	UHF
S74	523.25	UHF
S75	529.25	UHF
S76	535.25	UHF
S77	541.25	UHF
S78	547.25	UHF
S79	553.25	UHF
S80	559.25	UHF
S81	565.25	UHF
S82	571.25	UHF
S83	577.25	UHF
S84	583.25	UHF
S85	589.25	UHF
S86	595.25	UHF
S87	601.25	UHF
S88	607.25	UHF
S89	613.25	UHF
S90	619.25	UHF
S91	625.25	UHF
S92	631.25	UHF
S93	637.25	UHF
S94	643.25	UHF
S95	91.25	VHF
S96	97.25	VHF
S97	103.25	VHF
S98	109.25	VHF
S99	115.25	VHF



CATV CH mark (A row) : China area : attach 'Z'
besides area : attach 'S'

For example) China : Z10
besides area : S10

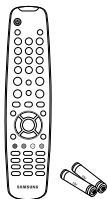
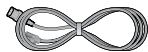

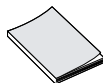

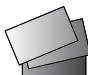
2-2. MJC : Motion Judder Cancellation



2-3. Spec Comparison

Model	PEARL (LN46A550P3R)	AMBER (LA46A650A1R)
Design		
Display Type	LCD TV	LCD TV
Resolution	1920 x 1080	1920 x 1080
LCD Panel	TFT LCD Panel 60Hz	TFT LCD Panel 120Hz
Screen Size	46"	46"
Picture ratio	16 : 9	16 : 9
Dimensions (W x H x D)	1,186.0 X 260.0 X 749.4 mm_with stand 1,186.0 X 111.0 X 685.5 mm_without stand	1131.0 x 279.9 x 774.5 mm_with stand 1131.0 x 94.5 x 714.2 mm_without stand
Weight	26.6 kg (SET after installation of Stand) 33.1 kg (Package)	26.6 Kg (SET after installation of Stand) 33.7 Kg (Package)
Brightness	500 nit	500 nit
Contrast Ratio	8000:1	8000:1
Picture Enhacer	DNle (FBE3)	DNle (FBE3)
Equalizer	5 Band (100Hz, 300Hz, 1KHz, 3KHz, 10KHz)	5 Band (100Hz, 300Hz, 1KHz, 3KHz, 10KHz)
Auto Motion Plus 120Hz	O	O
Surround Sound	3 Way SRS TruSurround	3 Way SRS TruSurround
Speaker Output	10W + 10W	10W + 10W
Antenna	1 (Cable/Air)	1 (Cable/Air)

2-4. Accessories

Product	Description	Code. No	Remark
	Remote Control & Batteries (AAA x 2)	Refer to each model's BOM	Samsung Electronics Service center
	Power Cord	Refer to each model's BOM	
	Cover-Bottom	Refer to each model's BOM	
	Owner's Instructions	Refer to each model's BOM	
	Cleaning Cloth	Refer to each model's BOM	
	Warranty Card / Registration Card / Safety Guide Manual (Not available in all locations)	Refer to each model's BOM	

Memo